

vtech[®]

Parent's Guide

Alphabet Apple



VTech understands that a child's needs and abilities change as they grow and with that in mind we develop our toys to teach and entertain at just the right level...

vtech Baby

Toys that will stimulate their interest in different textures, sounds and colours

I am...

...responding to colours, sounds and textures

...understanding cause and effect

...learning to touch, reach, grasp, sit-up, crawl and toddle

Birth-36 months



Pre-School

Interactive toys to develop their imagination and encourage language development

I want...

...to get ready for school by starting to learn the alphabet and counting

...my learning to be as fun, easy and exciting as can be

...to show my creativity with drawing and music so my whole brain develops

3-6 years



Electronic Learning Computers

Cool, aspirational and inspiring computers for curriculum related learning

I need...

...challenging activities that can keep pace with my growing mind

...intelligent technology that adapts to my level of learning

...National Curriculum based content to support what I'm learning at school

4-10 years

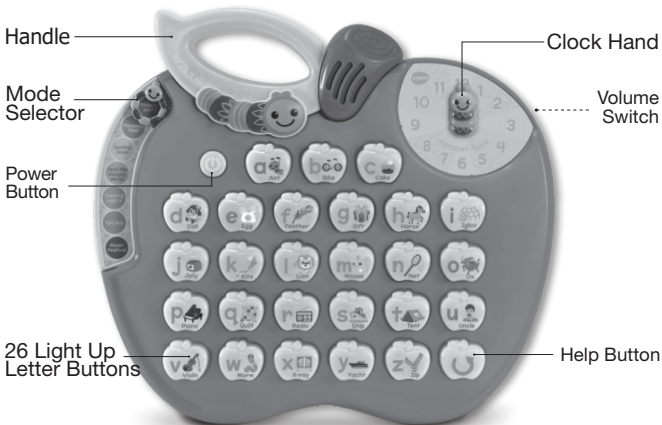


To learn more about this and other VTech® products, visit www.vtech.co.uk

INTRODUCTION

Thank you for purchasing the **Alphabet Apple**.

The **Alphabet Apple** is an interactive light up learning board that's full of fun! Twenty-six letter buttons and a moveable clock hand encourage discovery as your child explores essential pre-school skills like phonics, letters, numbers, spelling, vocabulary and time concepts. Realistic sound effects, light up buttons, fun phrases, different levels of play and cheerful melodies add to the fun and learning!



INCLUDED IN THE PACKAGE

- Alphabet Apple
- Parent's Guide

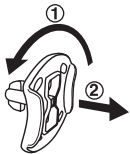
WARNING:

All packing materials such as tape, plastic sheets, packaging locks, removable tags, cable ties, cords and packaging screws are not part of this toy and should be discarded for your child's safety.

NOTE:

Please keep this parent's guide as it contains important information.

Removing the Packaging Locks

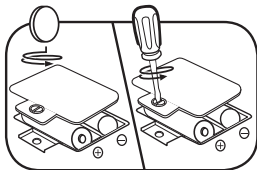


- ① Rotate the packaging locks anticlockwise several times.
- ② Pull out the packaging locks and discard.

INSTRUCTIONS

BATTERY REMOVAL AND INSTALLATION

1. Make sure the unit is turned **OFF**.
2. Locate the battery cover on the back of the unit. Use a screwdriver to loosen the screw. Then, remove the cover.
3. If used batteries are present, remove these batteries from the unit by pulling up on one end of each battery.
4. Install 2 new AA (AM-3/LR6) batteries following the diagram inside the battery box. (For best performance, alkaline batteries or fully charged Ni-MH rechargeable batteries are recommended).
5. Replace the battery cover and tighten the screw to secure.



WARNING:

Adult assembly required for battery installation.
Keep batteries out of reach of children.

IMPORTANT: BATTERY INFORMATION

- Insert batteries with the correct polarity (+ and -).
- Do not mix old and new batteries.
- Do not mix alkaline, standard (carbon-zinc) or rechargeable batteries.
- Only batteries of the same or equivalent type as recommended are to be used.
- Do not short-circuit the supply terminals.
- Remove batteries during long periods of non-use.
- Remove exhausted batteries from the toy.
- Dispose of batteries safely. Do not dispose of batteries in fire.

RECHARGEABLE BATTERIES:

- Remove rechargeable batteries from the toy before charging.
- Rechargeable batteries are only to be charged under adult supervision.
- Do not charge non-rechargeable batteries.

Disposal of batteries and product



The crossed-out wheellie bin symbols on products and batteries, or on their respective packaging, indicates they must not be disposed of in domestic waste as they contain substances that can be damaging to the environment and human health.



The chemical symbols Hg, Cd or Pb, where marked, indicate that the battery contains more than the specified value of mercury (Hg), cadmium (Cd) or lead (Pb) set out in the Batteries and Accumulators Regulation.

The solid bar indicates that the product was placed on the market after 13th August, 2005.

Help protect the environment by disposing of your product or batteries responsibly.

VTech® cares for the planet.

Care for the environment and give your toy a second life by disposing of it at a small electricals collection point so all its materials can be recycled.

In the UK:

Visit www.recyclenow.com to see a list of collection points near you.

In Australia & New Zealand:

Check with you local council for kerbside collections.

PRODUCT FEATURES

1. Power Button

Press the **Power Button** to turn the unit **On**. Press the button again to turn the unit **Off**.



2. Mode Selector

Slide the **Mode Selector** up or down to select from seven activities.



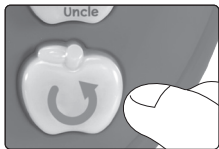
3. Light Up Letter Buttons

Press the **Light Up Letter Buttons** to explore letters, objects, play music, or to answer questions in related activities.



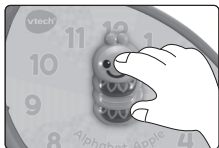
4. Help Button

Press the **Help Button** to repeat the current question or receive a helpful hint.



5. Moveable Clock Hand

Move the **Clock Hand** at any time to hear the corresponding time and a related phrase, or answer a question in the Quiz Time activity.



Volume Switch

Located on the back of the product, the **Volume Switch** can be moved to the right for higher volume or to the left for lower volume.

Automatic Shut-Off

To preserve battery life, the **Alphabet Apple** will automatically shut off after several minutes without input. The unit can be turned on again by pressing the **Power Button**.

TO BEGIN PLAY

Press the **Power Button** to turn on the unit, then move the **Mode Selector** to select a game to play.

Note

Make sure the Mode Selector is positioned on one of the seven activities. If you accidentally move the Mode Selector between two activity modes, the worm will ask you to move the slider to select a game.

ACTIVITIES

1. Phonics World

Move the **Mode Selector** to the first position to enter this activity. You will be asked to press any **Light Up Letter Button** to learn about letter sounds. Keep pressing the buttons to hear more letter sounds.

2. Discovery Time

Move the **Mode Selector** to the second position to enter this activity. You will be asked to press any **Light Up Letter Button** to learn about vocabulary words. Press the button to hear the corresponding response.

3. Spelling Game

Move the **Mode Selector** to the third position to enter this activity. You will hear a word and how it is spelt. Watch carefully as the buttons light up to spell the word. Then press the **Light Up Letter Buttons** in the correct order to spell the word. There are four difficulty levels in this activity. After every five words are spelt correctly, it will automatically move up to the next level of words.

4. Feed the Hungry Worm

Move the **Mode Selector** to the fourth position to enter this activity. The worm is hungry! You will be asked to press the flashing **Light Up Letter Buttons** to feed the hungry worm. There are five difficulty levels in this activity.

5. Dancing Lights

Move the **Mode Selector** to the fifth position to enter this activity. This is a memory game. Watch as the buttons light up and then repeat the pattern. A new light will be added to the sequence after each correct round. There are three difficulty levels in this activity.

6. Eye Spy

Move the **Mode Selector** to the sixth position to enter this activity. You will be asked a series of quiz questions. Press a **Light Up Letter Button** or move the **Clock Hand** to answer. There are five difficulty levels in this activity.

7. Music Festival

Move the **Mode Selector** to the seventh position to enter this activity. Press any of the **Light Up Letter Buttons** to hear fun melodies. The lights will dance with the music! Press a button at any time to change the melody.

8. Clock

Move the **Clock Hand** at any time to hear the corresponding time and a related phrase.

MELODIES

1. Funiculi, Funicula
2. Bicycle Built for Two
3. Pat-a-Cake
4. Little Miss Muffet
5. Peas Porridge Hot
6. Mary Had a Little Lamb
7. Hey Diddle Diddle
8. William Tell Overture
9. Humpty Dumpty
10. Teddy Bears' Picnic
11. Did You Ever See a Lassie?
12. Skip to My Lou
13. Hickory Dickory Dock
14. Sailing, Sailing
15. Yankee Doodle
16. Ode to Joy
17. Wheels on the Bus
18. Polly Put the Kettle On
19. Row, Row, Row Your Boat
20. London Bridge
21. Twinkle, Twinkle Little Star
22. Old MacDonald Had a Farm
23. Glow Worm
24. Chopsticks
25. Three Little Kittens
26. A-Tisket, A-Tasket

CARE & MAINTENANCE

1. Keep the unit clean by wiping it with a slightly damp cloth.
2. Keep the unit out of direct sunlight and away from any direct heat sources.
3. Remove the batteries if the unit will not be in use for an extended period of time.
4. Do not drop the unit on hard surfaces and do not expose the unit to moisture or water.

TROUBLESHOOTING

If for some reason the unit stops working or malfunctions, please follow these steps:

1. Turn the unit **Off**.
2. Interrupt the power supply by removing the batteries.
3. Let the unit stand for a few minutes, then replace the batteries.
4. Turn the unit **On**. The unit should now be ready to use again.
5. If the unit still does not work, install a new set of batteries.

If the problem persists, please contact our Consumer Services Department, and a service representative will be happy to help you.

CONSUMER SERVICES

Creating and developing **VTech®** products is accompanied by a responsibility that we at **VTech®** take very seriously. We make every effort to ensure the accuracy of the information, which forms the value of our products. However, errors sometimes can occur. It is important for you to know that we stand behind our products and encourage you to call our Consumer Services Department with any problems and/or suggestions that you might have. A service representative will be happy to help you.

UK Customers:

Phone: 0330 678 0149 (from UK) or +44 330 678 0149 (outside UK)
Website: www.vtech.co.uk/support

Australian Customers:

Phone: 1800 862 155
Website: support.vtech.com.au

NZ Customers:

Phone: 0800 400 785
Website: support.vtech.com.au

PRODUCT WARRANTY/ CONSUMER GUARANTEES

UK Customers:

Read our complete warranty policy online at vtech.co.uk/warranty.

Australian Customers:

**VTECH ELECTRONICS (AUSTRALIA) PTY LIMITED –
CONSUMER GUARANTEES**

Under the Australian Consumer Law, a number of consumer guarantees apply to goods and services supplied by VTech Electronics (Australia) Pty Limited. Please refer to vtech.com.au/consumerguarantees for further information.

**Visit our website for more
information about our products,
downloads, resources and more.**

www.vtech.co.uk
www.vtech.com.au

